



Index

Index Introduction.....	2
Collections and About Ashley.....	3
Home Installations.....	4
Commercial Installations.....	5
ENVIROSCAPE	
British Countryside.....	6
Rolling Hills.....	12
London Skyline.....	18
London Skyline with a Twist.....	24
Brighton Skyline.....	30
Paintings Intro.....	36
ABSTRAKT	
Sonic Wave.....	36
Surging Wave.....	41
Vortex.....	46
ARTIQUE	
Vintage Panel.....	51
Weathered Paint.....	55
Abundance.....	60
Excess Paint.....	65
Bespoke Editions.....	70

Welcome to Southern Counties Glass

If you are looking for something that's truly magnificent, something that adds a contemporary edge to your home, workplace or build project, then this printed glass collection is for you.

In partnership with artist Ashley Phillips, we are proud to introduce you to a unique collection of designs, all adaptable and tailorable to your needs; each aiming to bring art into any space.

This is the first time Ashley has created a commercial collection and we are honoured that he has selected Southern Counties Glass for his exclusive collaboration.

Southern Counties Glass has, for many years, supplied and installed glass splashbacks and wall coverings. Aesthetically, glass on walls is so pleasing to the eye and, with the huge functional and practical benefits glass brings, it's a natural choice to make.

Ashley's designs lend themselves beautifully to wall-cladding in any space, however they will also look amazing as art pieces in their own right.

All Ashley Phillips designs have his signature on them; Ashley has personally selected the most complementary colour for each one.

We are delighted to bring you this collection of Art Images for Interiors and hope you find inspiration for your project from the designs on offer.

Scale

Most designs can be scaled proportionally. All Skyline designs can have the sky height increased to allow for T shape around extractors.

About Ashley Phillips



Ashley on Glartique stand at 100% Design 2017 in front of one of his bespoke printed shower walls

Ashley is a designer and artist who spent the first ten years of his creative career as a mural artist. In 2010, he began experimenting with surfaces and a new venture was born. His vision was to offer clients a more personal, emotional connection to the functional spaces in their homes. His first collection was inspired by the preparations for London 2012 and celebrates the iconic London Skyline. Since then, Ashley has developed many more beautiful collections, some featuring cityscapes, some drawing on his passion for nature and others going back to his roots as an artist. In all, Ashley's passion for colour and texture creates designs which truly elevate functional surfaces into art. In addition to the ready-made collections, Ashley can also design and integrate bespoke features into any of these designs. Please ask for more information.

Art Images for Interiors by Ashley Phillips is grouped into three ranges, each with their own story.

ENVIROSCAPE

A beautiful range, inspired by the British countryside and cityscapes. This range began with the iconic London Skyline and now includes Brighton's beautiful skyline as well as coastal and countryside scenes.

ABSTRAKT

The Abstrakt range draws on Ashley's abstract self-expressionism paintings. His aim is to capture the movement of energy and hold it still; to reflect the inner voice and drive mindfulness and meditation. The longer you look at them the more you see. Experimenting with colour, he creates an uplifting range of abstract designs which will bring life and vibrancy to any space.

ARTIQUE

This range was inspired by the textures and colours built up over time from Ashley wiping the paint off his palette knife. He became fascinated with the layering; the excess paint became the artwork in its own right. Each of the painted batons has a unique history and mix of coloured layers. The range Excess Paint and Abundance are individual batons while Weathered Paint and Vintage Panels are carefully selected amalgamations.



BCB2 British Countryside Blue 2 (cropped)



BCB1 British Countryside Blue 1 (bespoke extension)



VPP1 Vintage panel purple 1



LSTB1 The London Skyline with a Twist Blue 1

Home Installations



VY3 Vortex Yellow 3 Commercial Installation



SWO2 Sonic Wave Original 2 Commercial Installation



SGWP2 Surging Wave Purple 2 Commercial Installation



SGWO1 Surging Wave Original 1 Commercial Installation

Commercial Installations

British Countryside

For those who love the springtime, and the rolling British countryside at this special time of year, this range is for you. Poppies, wild grasses, cherry blossom and swallows swooping over the patchwork rolling hills capturing our countryside at its best.



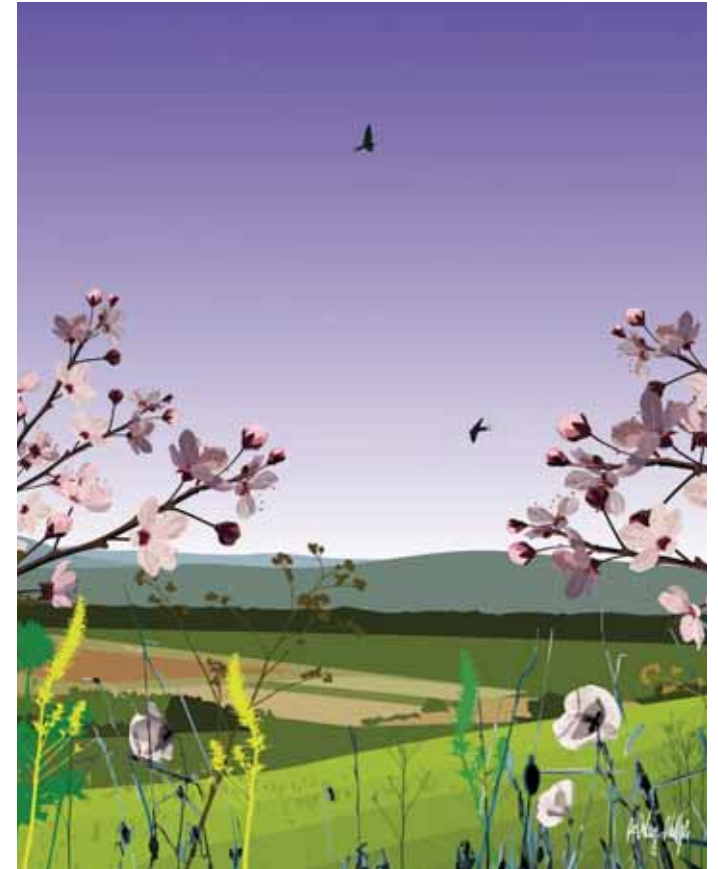
BCP1 British Countryside Purple 1



BCB2 British Countryside Blue 2 bespoke cropped



BCP2 British Countryside Purple 2



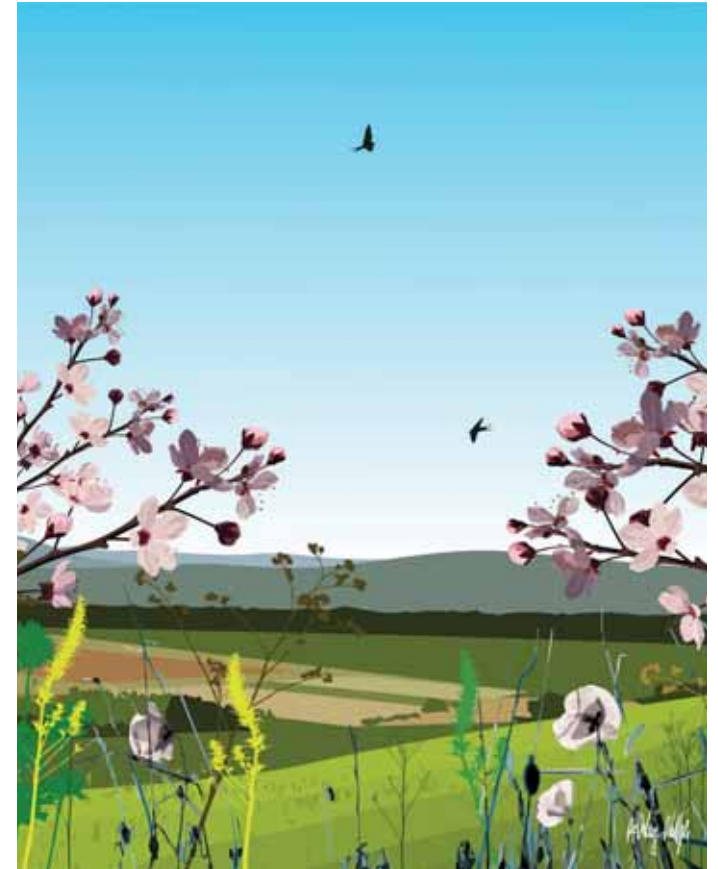
BCP3 British Countryside Purple 3



BCP1 British Countryside Purple 1



BCB2 British Countryside Blue 2



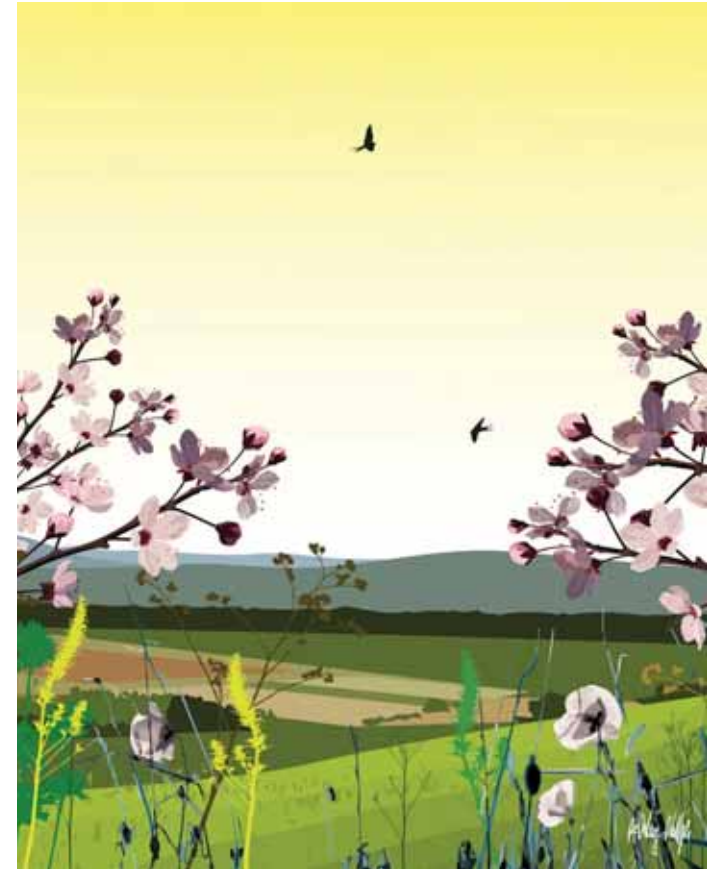
BCB3 British Countryside Blue 3



BCB1 British Countryside Blue 1



BCY2 British Countryside Yellow 2



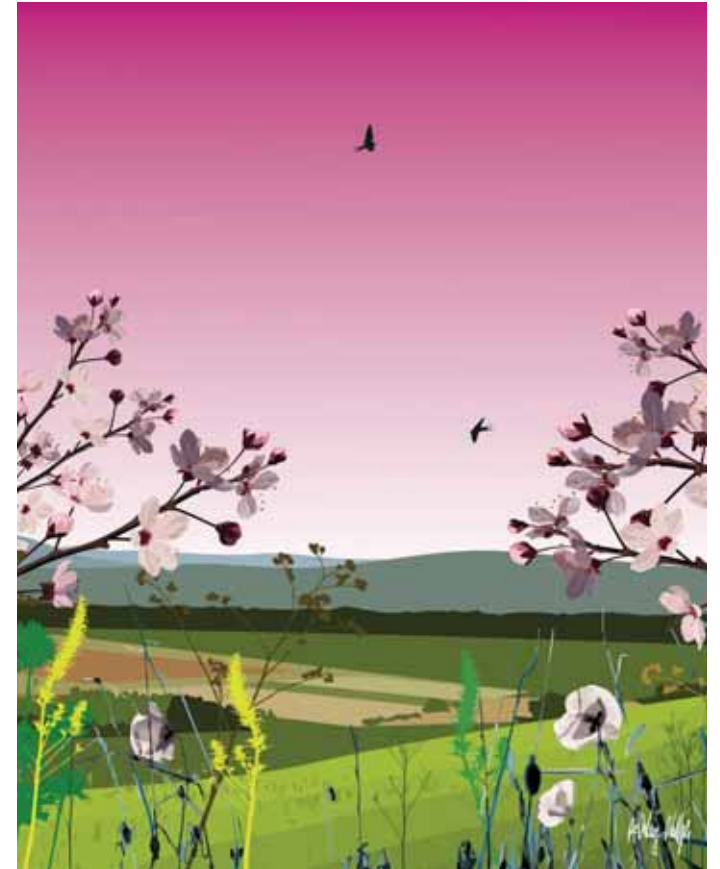
BCY3 British Countryside Yellow 3



BCY1 British Countryside Yellow 1



BCPk2 British Countryside Pink 2



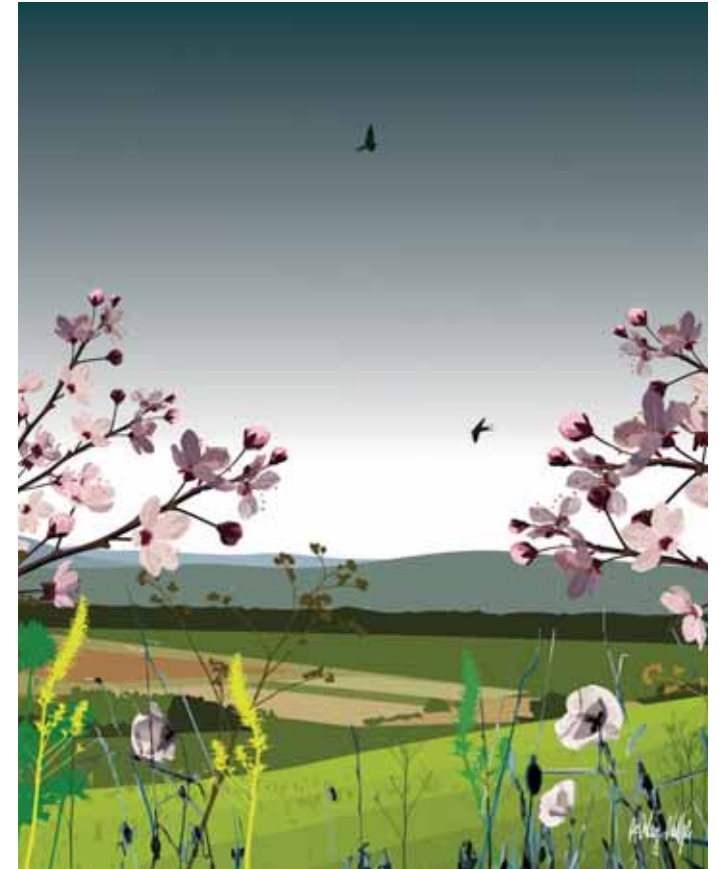
BCPk3 British Countryside Pink 3



BCPk1 British Countryside Pink 1



BCUM2 British Countryside Ultra Marine 2



BCUM3 British Countryside Ultra Marine 3



BCUM1 British Countryside Ultra Marine 1

Rolling Hills (with and without Cows!)

Ashley's art and designs usually originate from powerful emotional experiences and memories. A lasting memory when he was young were the regular long slow trips through the South Downs before dual-carriageways to visit his grandparents who lived in Brighton. He would stare out of the window and watch the landscape change in the distance and become a series of beautiful green and yellow rolling hills as they got closer, dotted with sheep and cows.



RHB1 Rolling Hills Blue 1



RHCoUM2 Rolling Hills with Cows Ultra Marine 2



RHCoB1 Rolling Hills with Cows Blue 1



RHCoB2 Rolling Hills with Cows Blue 2



RHCoB3 Rolling Hills with Cows Blue 3



RHB1 Rolling Hills Blue 1



RHB2 Rolling Hills Blue 2



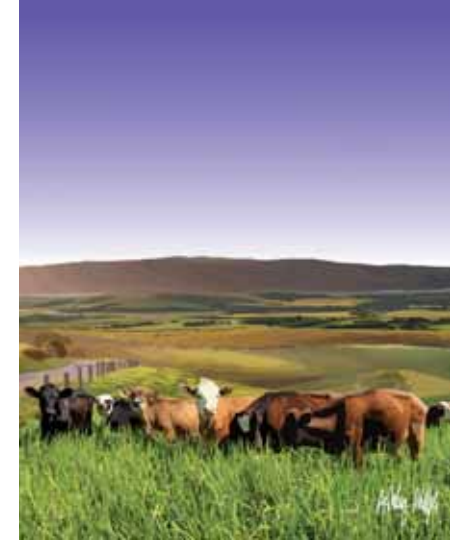
RHB3 Rolling Hills Blue 3



RHCoP1 Rolling Hills with Cows Purple 1



RHCoP2 Rolling Hills with Cows Purple 2



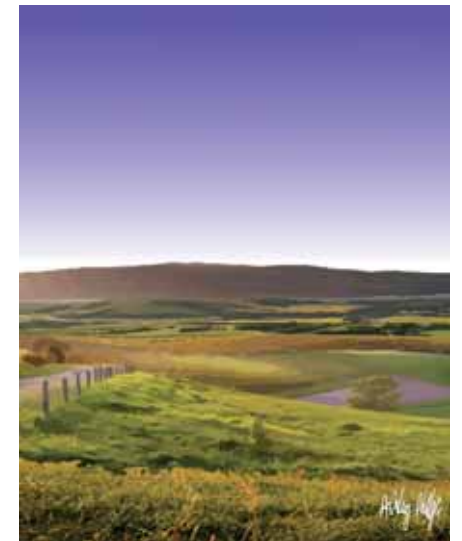
RHCoP3 Rolling Hills with Cows Purple 3



RHP1 Rolling Hills Purple 1



RHP2 Rolling Hills Purple 2



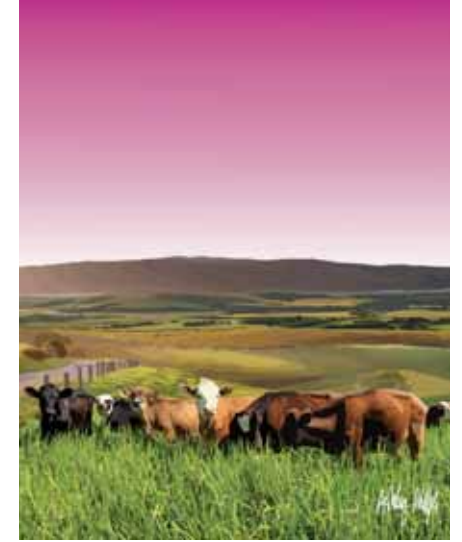
RHP3 Rolling Hills Purple 3



RHCoPk1 Rolling Hills with Cows Pink 1



RHCoPk2 Rolling Hills with Cows Pink 2



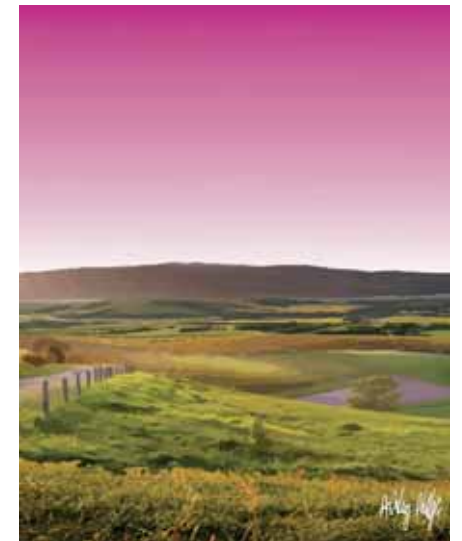
RHCoPk3 Rolling Hills with Cows Pink 3



RHP1 Rolling Hills Pink 1



RHP2 Rolling Hills Pink 2



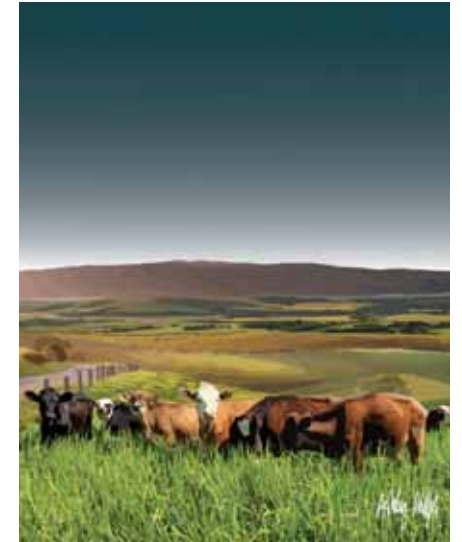
RHP3 Rolling Hills Pink 3



RHCoUM1 Rolling Hills with Cows Ultra Marine 1



RHCoUM2 Rolling Hills with Cows Ultra Marine 2



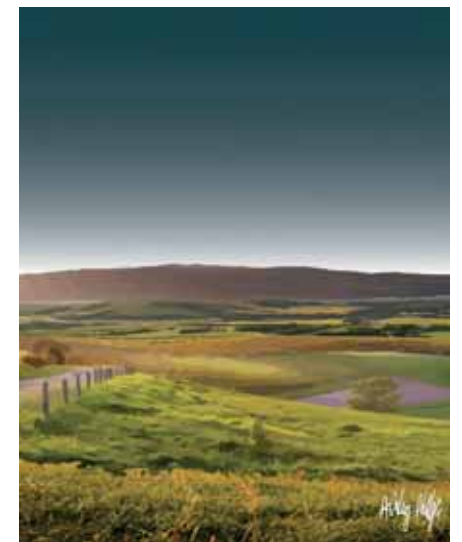
RHCoUM3 Rolling Hills with Cows Ultra Marine 3



RHUM1 Rolling Hills Ultra Marine 1



RHUM2 Rolling Hills Ultra Marine 2



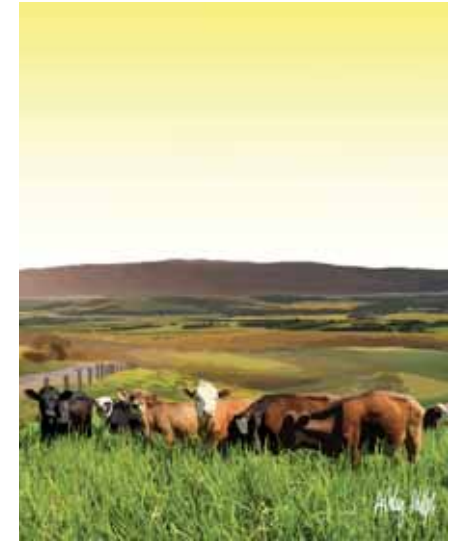
RHUM3 Rolling Hills Ultra Marine 3



RHCoY1 Rolling Hills with Cows Yellow 1



RHCoY2 Rolling Hills with Cows Yellow 2



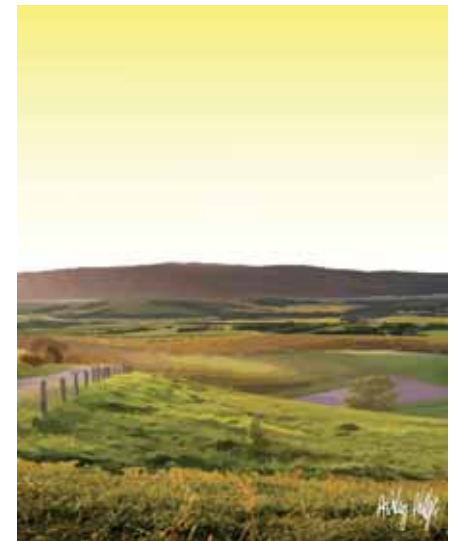
RHCoY3 Rolling Hills with Cows Yellow 3



RHY1 Rolling Hills Yellow 1



RHY2 Rolling Hills Yellow 2



RHY3 Rolling Hills Yellow 3

London Skyline

Ashley's version of the iconic London Skyline was one of his original designs in 2012 and is still one of the most popular. While this is not a complete up to date view of all the latest structures that are appearing and changing the constantly evolving skyline; this is a snapshot in time of the true London classics. Less is more some would say.



LSUM1 The London Skyline Ultra Marine 1



LSPk2 London Skyline Pink 2



LSSPk2 London Skyline Pink 3



LSPk1 London Skyline Pink 1



LSY2 London Skyline Yellow 2



LSY3 London Skyline Yellow 3



LSY1 London Skyline Yellow 1



LSP2 London Skyline Purple 2



LSP3 London Skyline Purple 3



LSP1 London Skyline Purple 1



LSB2 London Skyline Blue 2



LSB3 London Skyline Blue 3



LSB1 London Skyline Blue 1



LSUM2 London Skyline Ultra Marine 2



LSUM3 London Skyline Ultra Marine 3



LSUM1 London Skyline Ultra Marine 1

The London Skyline with a Twist

This is a hit with food lovers. Adding some culinary humour to the kitchen, Ashley has added nine food jokes with a twist, connecting foods to classic London landmarks. This has become one of Ashley's most popular designs. The traditional skyline is combined with kitchen implements to give a culinary twist to the ordinary. A fabulous addition to the kitchen and a great talking point as guests try to decipher the landmark clues.



LSTPk1 London Skyline with a Twist Pink 1 with bespoke intergrated socket and magnetic surface



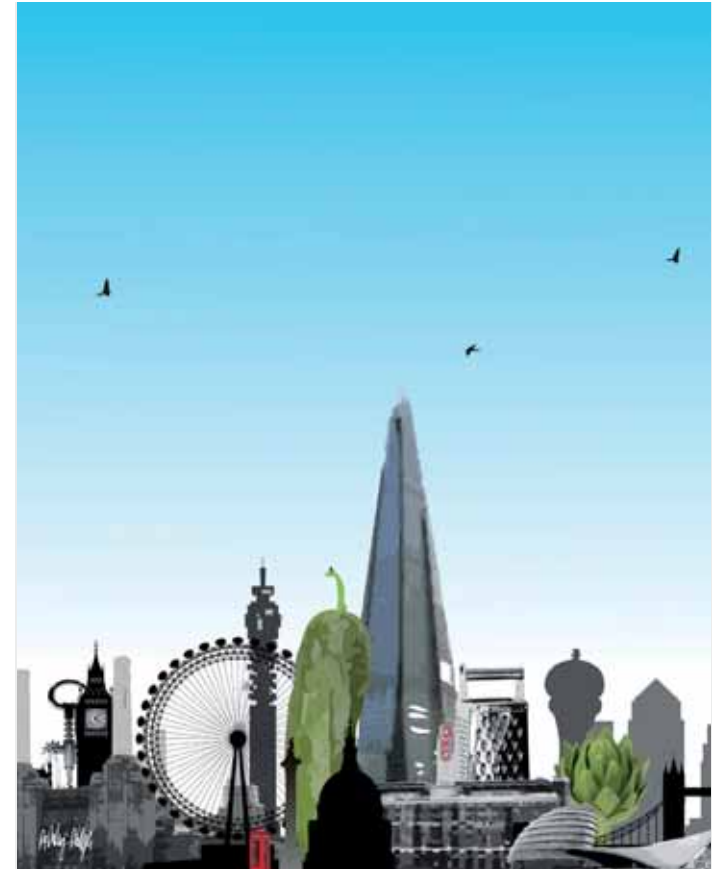
LSTB1 The London Skyline with a Twist Blue 1 with bespoke intergrated socket



LSTB2 The London Skyline with a Twist Blue 2 with bespoke scaling and assetts



LSTB2 The London Skyline with a Twist Blue 2



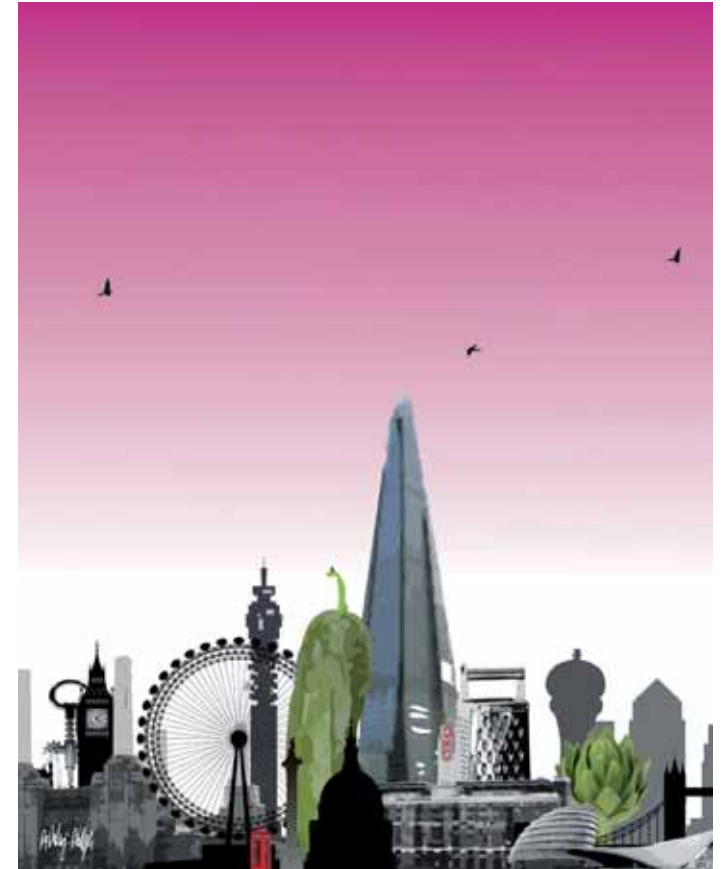
LSTB3 The London Skyline with a Twist Blue 3



LSTB1 The London Skyline with a Twist Blue 1



LSTPk2 London Skyline with a Twist Pink 2



LSTPk3 London Skyline with a Twist Pink 3



LSTPk1 London Skyline with a Twist Pink 1



LSTP2 London Skyline with a Twist Purple 2



LSTP3 London Skyline with a Twist Purple 3



LSTP1 London Skyline with a Twist Purple 1



LSTY2 London Skyline with a Twist Yellow 2



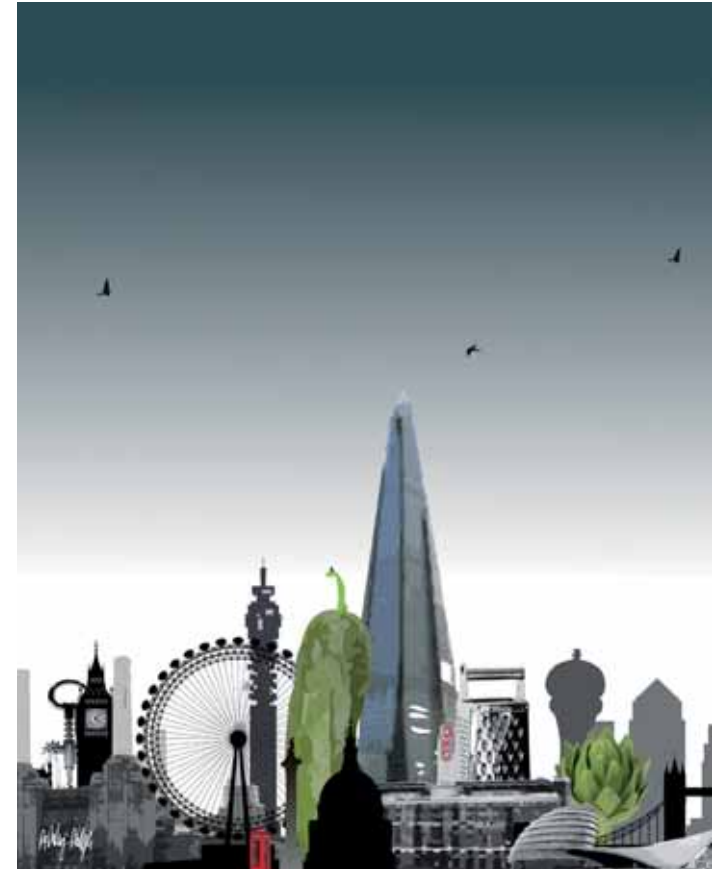
LSTY3 London Skyline with a Twist Yellow 3



LSTY1 London Skyline with a Twist Yellow 1



LSTUM2 London Skyline with a Twist Ultra Marine 2



LSTUM3 London Skyline with a Twist Ultra Marine 3



LSTUM1 London Skyline with a Twist Ultra Marine 1

Brighton Skyline

London to Brighton holds a special bond, not just for Ashley, but since the first running race in 1837, the first car race in 1896 to the first bike race in 1976 around the same time as Quadrophenia's Mods and Rockers. Visiting family in Brighton several times a year throughout his childhood created powerful and lasting memories of smells and sounds; of walks on the wide turquoise-lined promenades, the piers, pebbles and Pavilion. Brighton creates special memories for everyone.

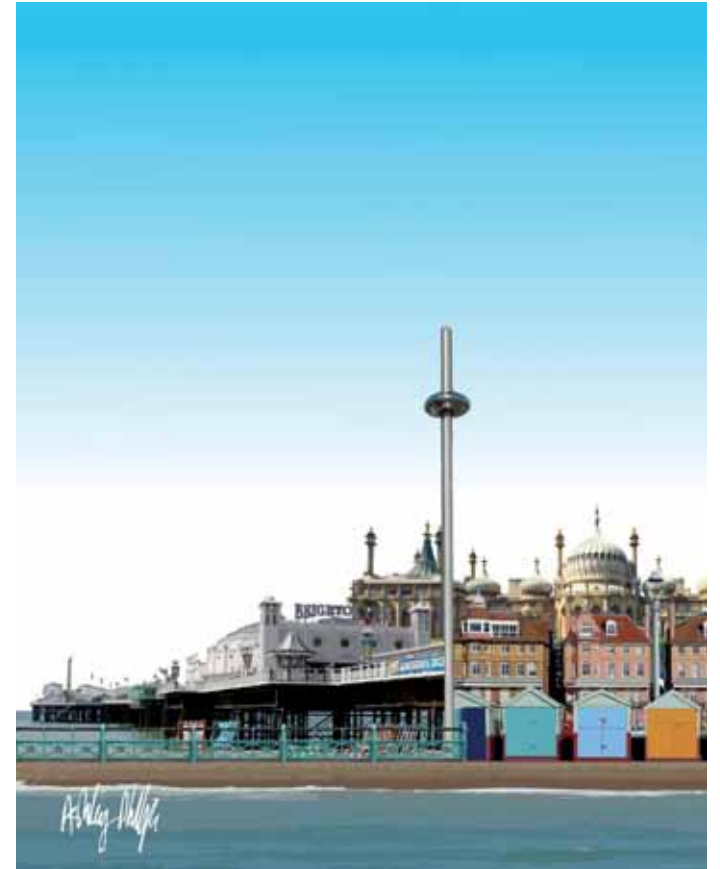


BSP1 Brighton Skyline Purple 1

ENVIROSCAPE



BSB2 Brighton Skyline Blue 2



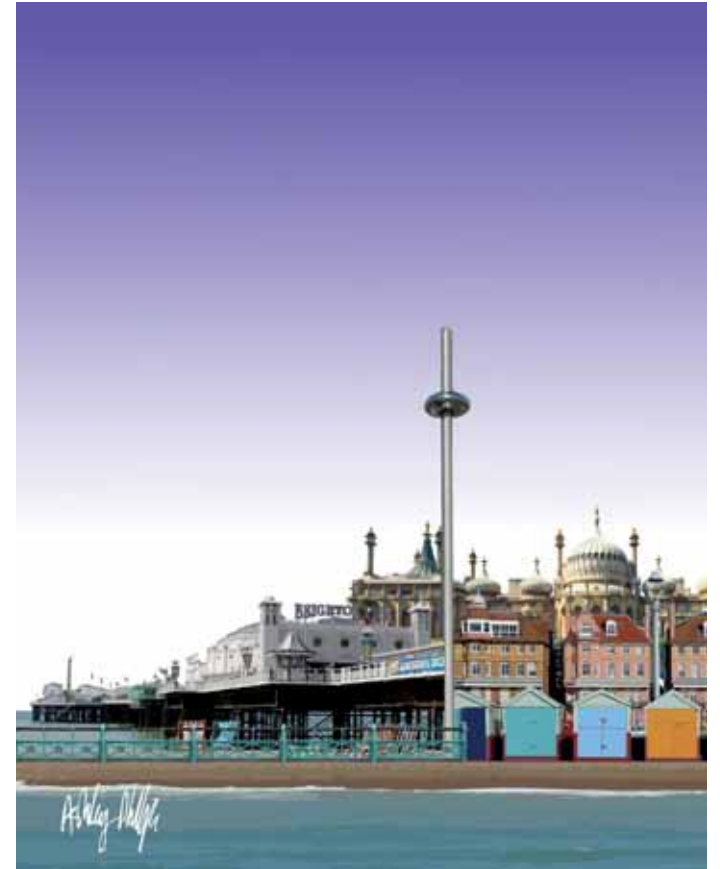
BSB3 Brighton Skyline Blue 3



BSB1 Brighton Skyline Blue 1



BSP2 Brighton Skyline Purple 2



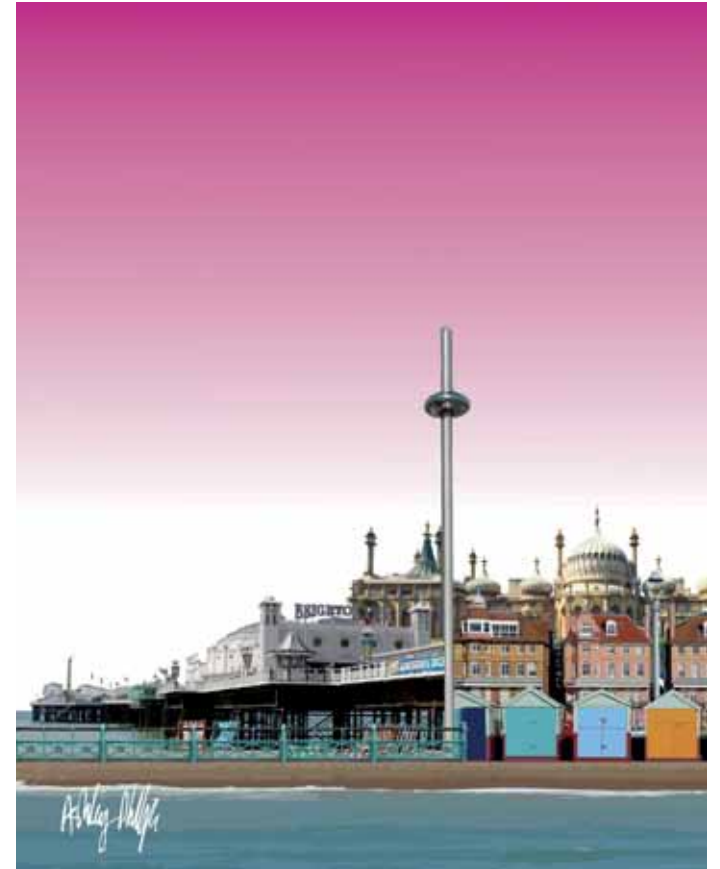
BSP3 Brighton Skyline Purple 3



BSP1 Brighton Skyline Purple 1



BSPk2 Brighton Skyline Pink 2



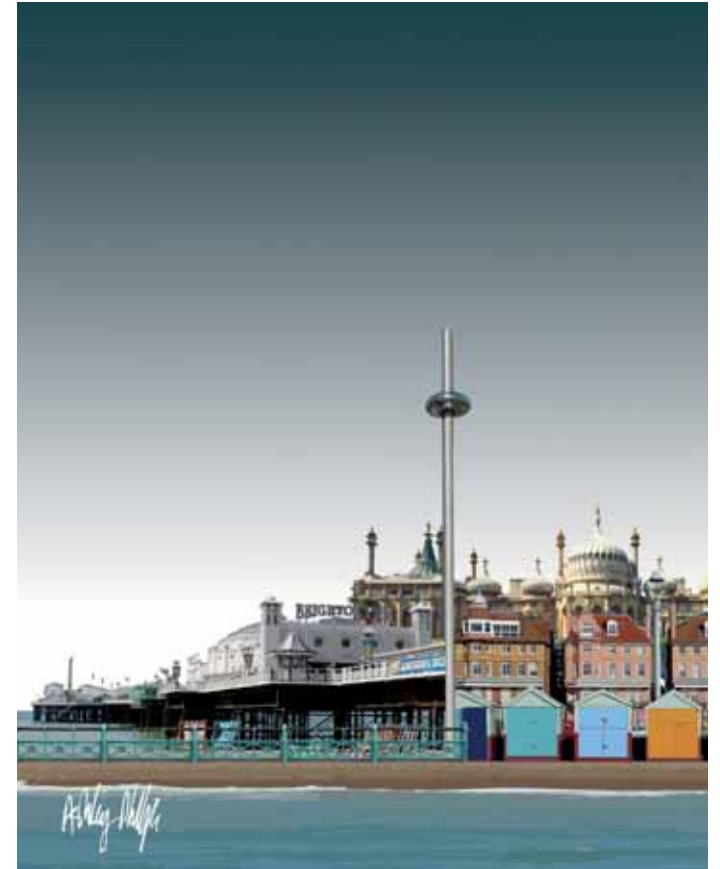
BSPk3 Brighton Skyline Pink 3



BSPk1 Brighton Skyline Pink 1



BSUM2 Brighton Skyline Ultra Marine 2



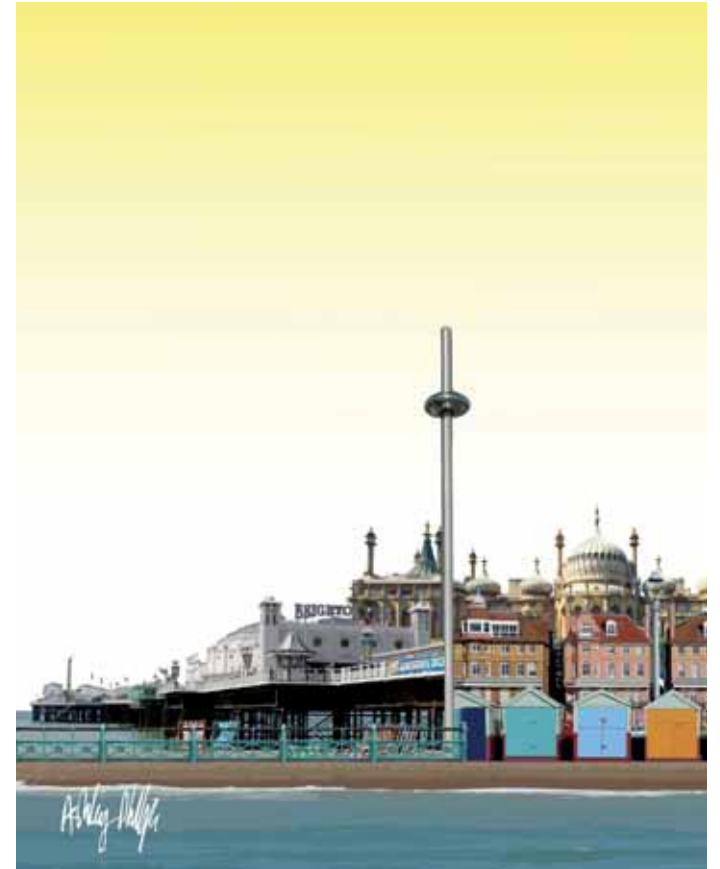
BSUM3 Brighton Skyline Ultra Marine 3



BSUM1 Brighton Skyline Ultra Marine 1



BSY2 Brighton Skyline Yellow 2



BSY3 Brighton Skyline Yellow 3



BSY1 Brighton Skyline Yellow 1

Introduction about Paintings

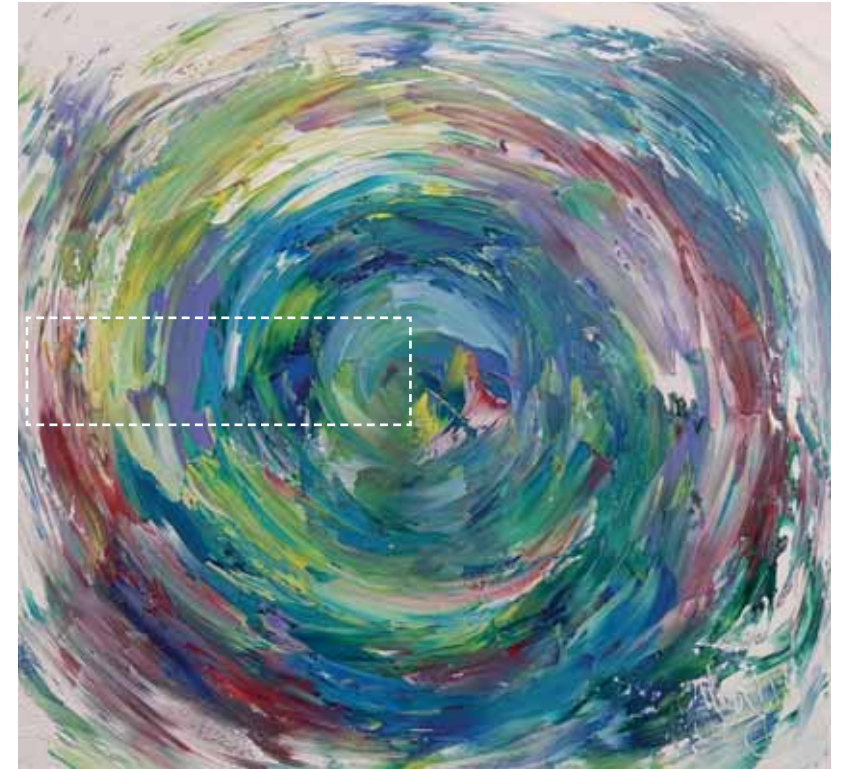
Ashley is a Graphic Artist and also paints as a Fine Artist. Close up photographs of sections of his paintings provided the inspiration for a whole new collection of splashbacks and their colourways that are available here for the first time. Borne from one of Ashley's latest art projects, the style of abstract self-expressionism aims to reflect the inner voice and drive mindfulness and meditation. The longer you look the more you see.

Sonic Wave



SWO1 Sonic Wave Original 1

ABSTRAKT



ABSTRAKT

Sonic Wave, Surging Wave and Vortex.

Ashley's Abstrakt art is inspired by the COBRA art movement, based on spontaneity and experiment. Like the ying and yang there is positive and negative. Energy rises up, needing to come out, to be seen, to be recorded and captured. Flicking the palette knife in fast arcs of the wrist, Ashley picks up colours just laid down from previous strokes, lifting them up like continuous waves rolling over one another. Positive Energy in motion. E-motion. Ashley's paintings capture a moment in time, motion in suspended animation.



SWO2 Sonic Wave Original 2



SWO3 Sonic Wave Original 3



SWO1 Sonic Wave Original 1

ABSTRAKT

Sonic Wave Original



SWG2 Sonic Wave Grey 2



SWG3 Sonic Wave Grey 3



SWG1 Sonic Wave Grey 1

ABSTRAKT

Sonic Wave Grey



SWPk2 Sonic Wave Pink 2



SWPk3 Sonic Wave Pink 3



SWPk1 Sonic Wave Pink 1

ABSTRAKT

Sonic Wave Pink



SWY2 Sonic Wave Yellow 2



SWY3 Sonic Wave Yellow 3



SWY1 Sonic Wave Yellow 1

ABSTRAKT

Sonic Wave Yellow

Surging Wave



SGWP1 Surging Wave Purple 1



SGWY2 Surging Wave Yellow 2



SGWM2 Surging Wave Mauve 2



SGW02 Surging Wave Original 2



SGW03 Surging Wave Original 3



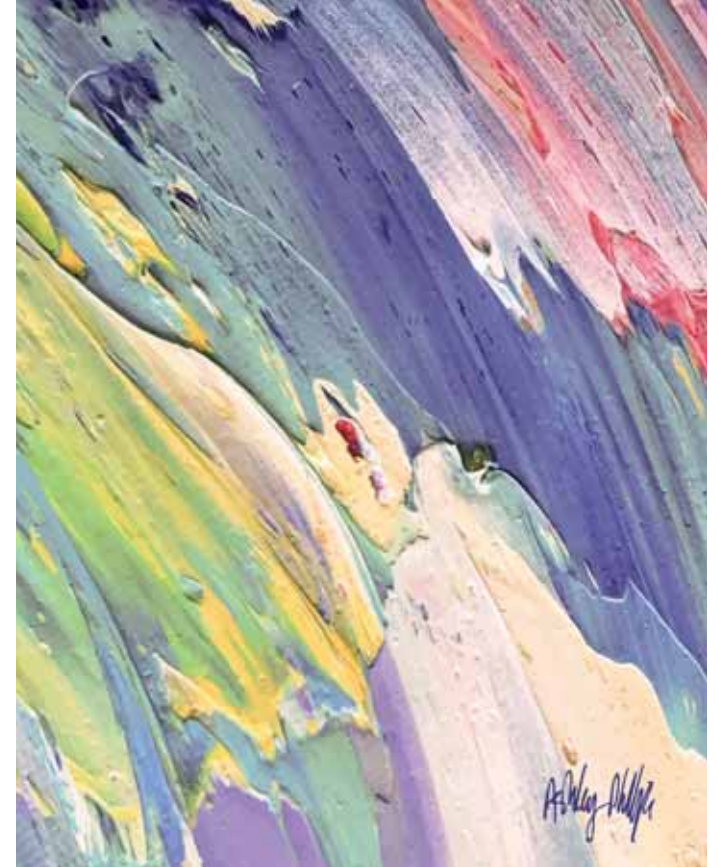
SGW01 Surging Wave Original 1

ABSTRAKT

Surging Wave Original



SGWP2 Surging Wave Purple 2



SGWP3 Surging Wave Purple 3



SGWP1 Surging Wave Purple 1

ABSTRAKT

Surging Wave Purple



SGWM2 Surging Wave Mauve 2



SGWM3 Surging Wave Mauve 3



SGWM1 Surging Wave Mauve 1

ABSTRAKT

Surging Wave Mauve



SGWY2 Surging Wave Yellow 2



SGWY3 Surging Wave Yellow 3



SGWY1 Surging Wave Yellow 1

ABSTRAKT

Surging Wave Yellow

Vortex



VY1 Vortex Yellow 1



VY2 Vortex Yellow 2



V02 Vortex Original 2



V03 Vortex Original 3



V01 Vortex Original 1

ABSTRAKT

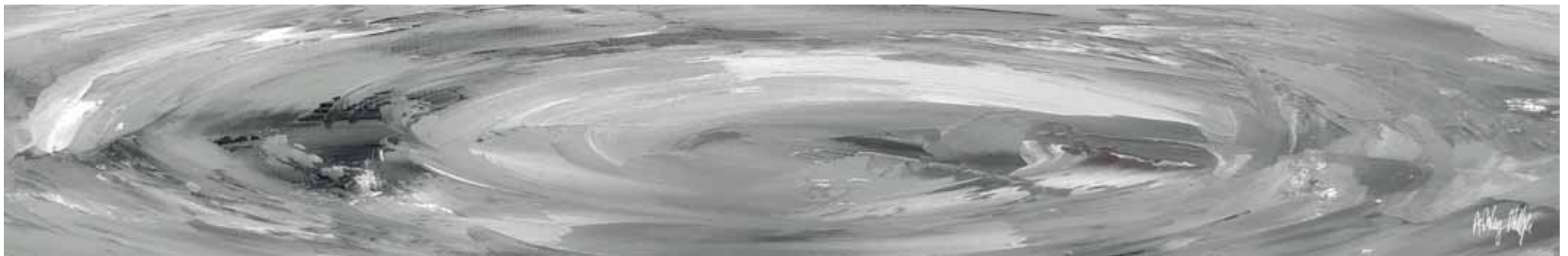
Vortex Original



VG2 Vortex Grey 2



VG3 Vortex Grey 3



VG1 Vortex Grey 1

ABSTRAKT

Vortex Grey



Vpk2 Vortex Pink 2



Vpk3 Vortex Pink 3



Vpk1 Vortex Pink 1

ABSTRAKT

Vortex Pink



VY2 Vortex Yellow 2



VY3 Vortex Yellow 3



VY1 Vortex Yellow 1

ABSTRAKT

Vortex Yellow

Vintage Panels

ARTIQUE

Vintage Panels, Weathered Paint, Abundance and Excess Paint

These horizontal and vertical designs were created by chance. When Ashley cleans his palette knife he scrapes the left over paint onto old wooden slats in his studio creating new textures and colours layered over time from the various canvas paintings. Reusing the paint in this way creates an infinite variation of miniature canvasses; breathing new artistic life into these upcycled batons. Playing with the various colour combinations Ashley has created a collection of vintage and weathered-looking finishes reminiscent of Parisian shutters, Cuban coffee shops and ageing Miami Art Deco exteriors.



VPP1 Vintage Panels Purple 1



VPPK2 Vintage Panels Pink 2



VPO2 Vintage Panels Original 2



VPO3 Vintage Panels Original 3



VPO1 Vintage Panels Original 1

ARTIQUE

Vintage Panels Original



VPP2 Vintage Panels Purple 2



VPP3 Vintage Panels Purple 3



VPP1 Vintage Panels Purple 1

ARTIQUE

Vintage Panels Purple



VPPk2 Vintage Panels Pink 2



VPPk3 Vintage Panels Pink 3



VPPk1 Vintage Panels Pink 1

ARTIQUE

Vintage Panels Pink

Weathered Paint



WPO2 Weathered Paint Original 2



WPB1 Weathered Paint Blue 1



WPO2 Weathered Paint Original 2



WPO3 Weathered Paint Original 3



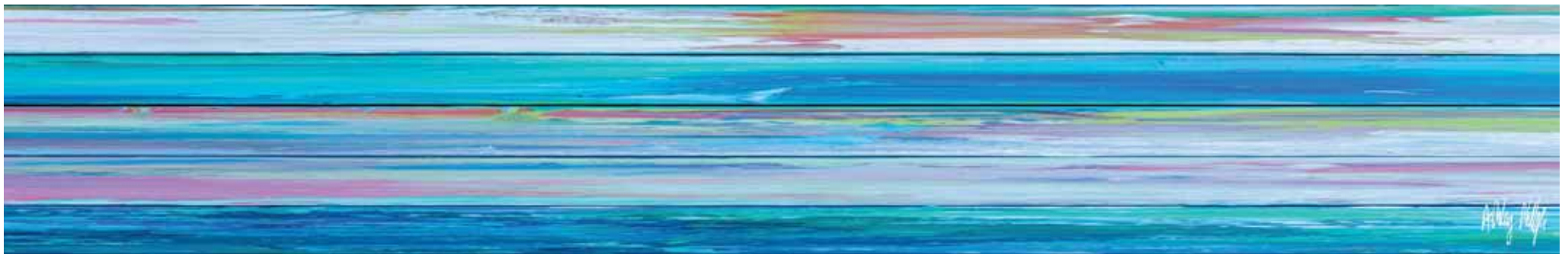
WPO1 Weathered Paint Original 1



WPB2 Weathered Paint Blue 2



WPB3 Weathered Paint Blue 3



WPB1 Weathered Paint Blue 1

ARTIQUE

Weathered Paint Blue



WPG2 Weathered Paint Green 2



WPG3 Weathered Paint Green 3



WPG1 Weathered Paint Green 1



WPPk2 Weathered Paint Pink 2



WPPk3 Weathered Paint Pink 3



WPPk1 Weathered Paint Pink 1

ARTIQUE

Weathered Paint Pink

Abundance



AG2 Abundance Grey 2



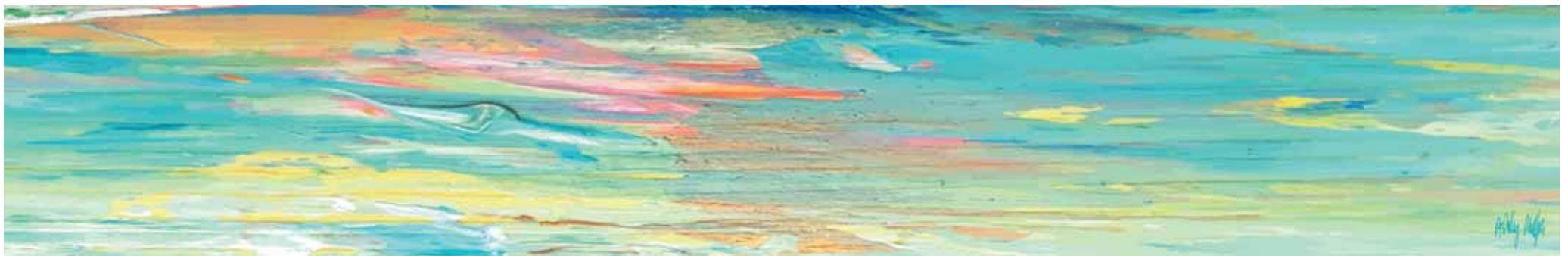
AO1 Abundance Original 1



AO2 Abundance Original 2



AO3 Abundance Original 3



AO1 Abundance Original 1

ARTIQUE

Abundance Original



AB2 Abundance Blue 2



AB3 Abundance Blue 3



AB1 Abundance Blue 1

ARTIQUE

Abundance Blue



AG2 Abundance Grey 2



AG3 Abundance Grey 3



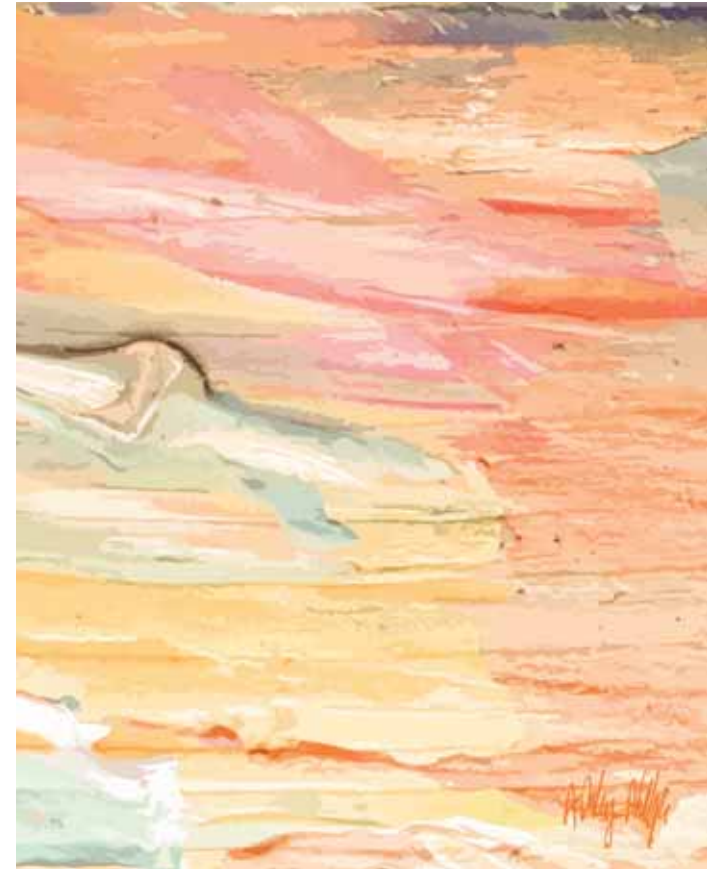
AG1 Abundance Grey 1

ARTIQUE

Abundance Grey



AY2 Abundance Yellow 2



AY3 Abundance Yellow 3



AY1 Abundance Yellow 1

ARTIQUE

Abundance Yellow

Excess Paint



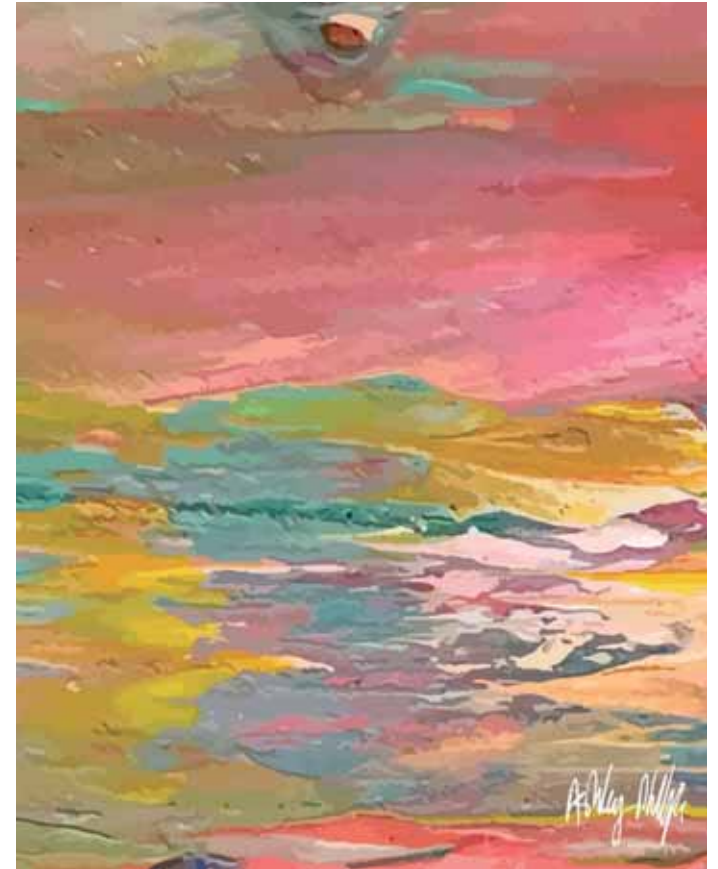
EPO1 Excess Paint Original 1



EPB2 Excess Paint Blue 2



EPO2 Excess Paint Original 2



EPO3 Excess Paint Original 3



EPO1 Excess Paint Original 1

ARTIQUE

Excess Paint Original



EPB2 Excess Paint Blue 2



EPB3 Excess Paint Blue 3



EPB1 Excess Paint Blue 1

ARTIQUE

Excess Paint Blue



EPM2 Excess Paint Mauve 2



EPM3 Excess Paint Mauve 3



EPM1 Excess Paint Mauve 1

ARTIQUE

Excess Paint Mauve



EPR2 Excess Paint Red 2



EPR3 Excess Paint Red 3



EPR1 Excess Paint Red 1

ARTIQUE

Excess Paint Red

Bespoke Editions

Why not commission a unique design? You can personalise any of Ashley's images by adding in individual assets to create a truly original design. What would you add?

Ashley Phillips



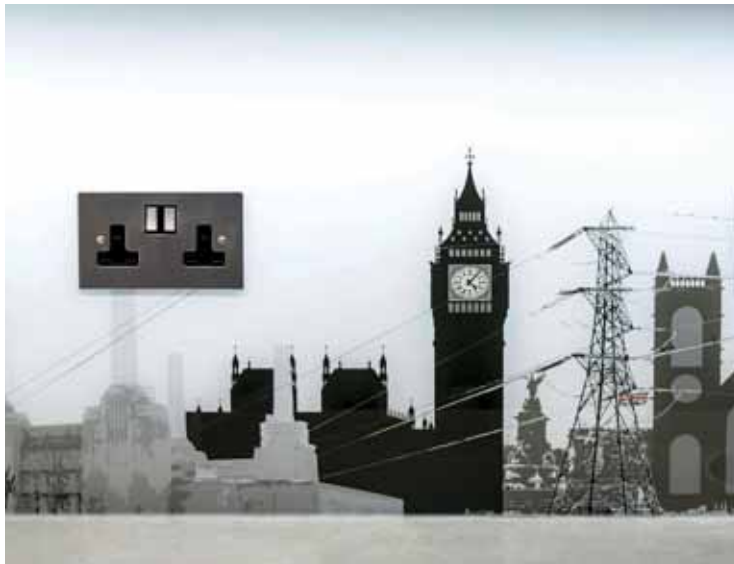
Eight additional assets are in this London Skyline with a Twist; including a champagne bottle as part of one of the Battersea power station chimneys, a racehorse and an angel on the socket



Above is a totally bespoke commission; World Skyline documenting all the places in the world the couple had been together



Integrating plug sockets into the design is one of Ashley's specialities and makes your splashback unique. A fee is charged per additional asset. Or you can brief Ashley from scratch for a totally bespoke project P.O.A



For personalised integrated socket additions and totally bespoke projects please pass on request to sales@southerncountiesglass.co.uk

Bespoke Editions



British Countryside



Rolling Hills



London Skyline



London Skyline with a Twist



Brighton Skyline



Sonic Wave



Surging Wave



Vortex



Vintage Panels



Weathered Paint



Abundance



Excess Paint

SOUTHERNCOUNTIESGLASS

Telephone 01403 264723 or 01403 263106 | www.southerncountiesglass.co.uk

Please email us for more information: sales@southerncountiesglass.co.uk

Unit I, Foundry Close, Horsham, West Sussex, RH13 5TX



Southern Counties Glass



scountiesglass